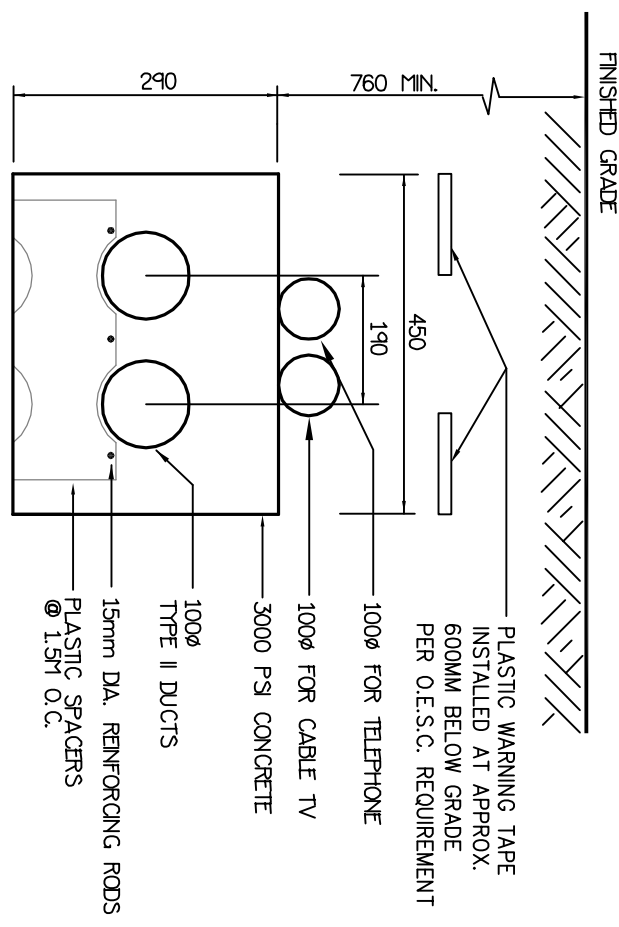
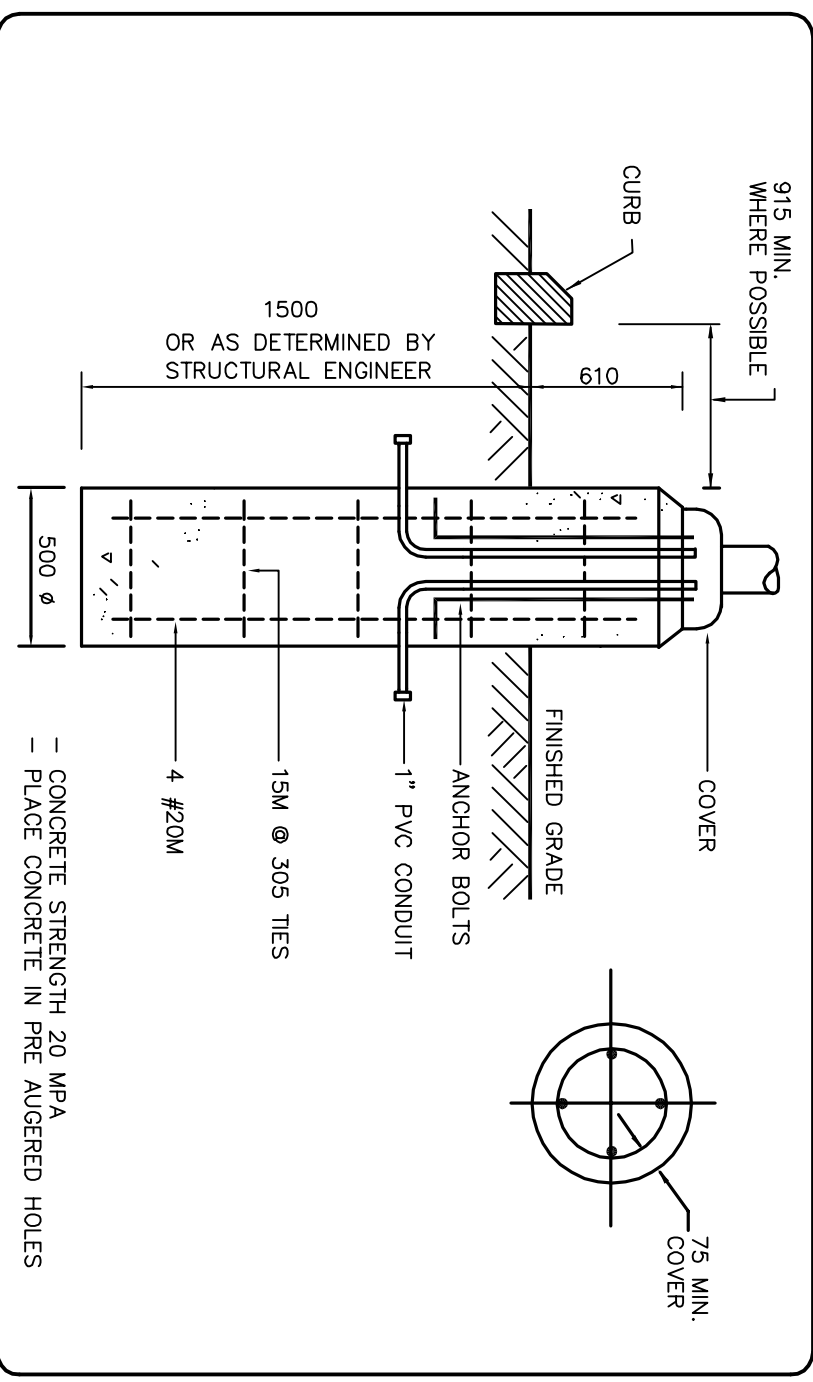


SITE PLAN



SECONDARY DUCTBANK DETAIL

SCALE: N.T.S.



LIGHTING POLE BASE

SCALE: N.T.S.

STATISTICS				
Description	Symbol	Avg	Max	Min
FRONT LOT	+	1.11c	1.91c	0.21c
REAR YARD	+	2.21c	6.01c	0.21c
				30.01
				11.01

LUMINAIRE SCHEDULE					
Symbol	Label	Qty	Catalog Number	Description	Lamp
P1	2		LITHONIA 683504DK SR2	OMERD OPTICAL ASM. MOUNTED LED AREA LUMINAIRE WITH 63 4000K LENS OPERATED PRECISION MOUNTED AGRICULTURE ILLUMS	ONE 73WATT LED
			207 pole mt. 24\"/>		
			real 22 MM		MRT LED 1. Absolute 0.90
					SR2 lens
					CSW LED 3 Absolute 0.90
					OC 4W 1
					AM
					Walls 73

CONTRACTOR MUST CHECK AND VERIFY ALL DIMENSIONS TO THE ENGINEERS BEFORE PROCEEDING WITH WORK. THIS DRAWING IS THE PROPERTY OF THE ENGINEERS AND DRAWINGS ARE NOT TO BE SCALED

REVISIONS

NO.	DATE	DESCRIPTION	BY
1	OCT 30/14	REVISED PER COMMENTS	H
-	30/14	ISSUED FOR PERMIT	H

MARK VOID ALL PRINTS DATED PREVIOUS TO FINAL DATE ABOVE

REVISIONS

CONSULTING ENGINEERS

J. D. Hubbert & Associates

200 EVANS AVENUE UNIT No.11
 ETOBICOKE, ONTARIO M9Z 1J7, CANADA
 TEL: (416) 291-3440 FAX: (416) 291-9188
 E-MAIL: jdh@jdhassociates.com

REGISTERED PROFESSIONAL ENGINEER
 J. D. HUBBERT
 ENGINEER
 ONTARIO

SITE PLAN

12 UNIT APARTMENT

79 LANSDOWNE STREET WEST
 PETERBOROUGH, ONTARIO

PROJECT NUMBER: **4-4399**

DATE: JUNE 2014

SCALE: 1:200

DRAWING NUMBER: **E-1** OF 6

EMERGENCY LIGHTING EQUIPMENT SCHEDULE
(CSA C.22.2 141 APPROVED)

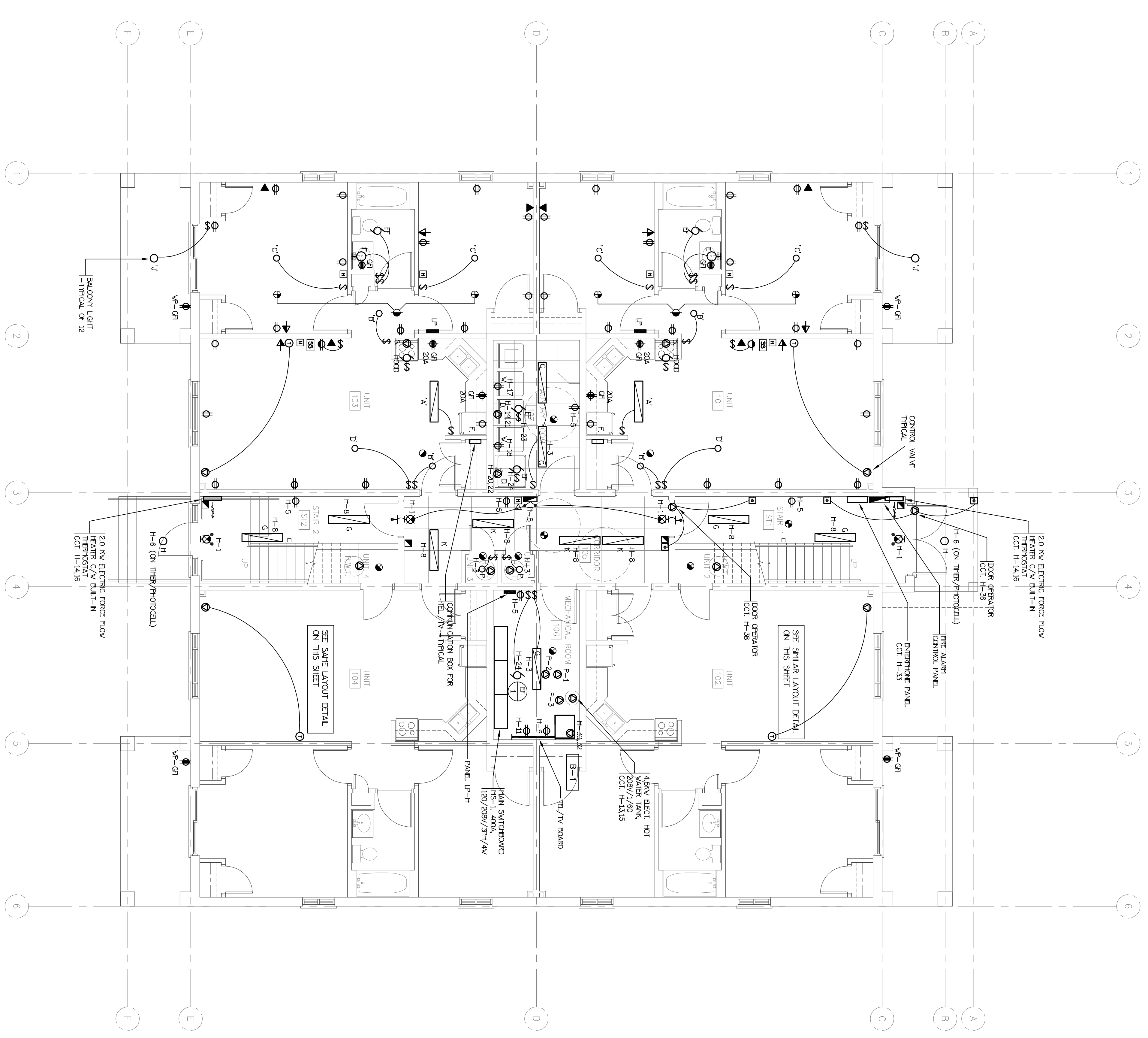
- ⓪ EXIT LIGHT - SELF CONTAINED, C/V 2 - 12 WATT, PHOTO QUARTZ HEADS, 5WV PHOTO, 120 D.C. CIRCUIT.
- Ⓚ LED EXIT LIGHT, WALL OR CEILING MOUNTED URGE SERIES
- Ⓛ 12 VOLT D.C. EMERGENCY BATTERY UNIT, WALL MOUNTED C/V 2 - 12 WATT PAR 18 PHOTO QUARTZ LAMP'S, SEE TO SHT LOADS.
- Ⓛ 12 VOLT D.C. EMERGENCY LIGHT HEAD, C/V 1 - 12 WATT PAR 18 PHOTO QUARTZ LAMP.
- Ⓛ 12 VOLT D.C. 1WV PHOTO LIGHT HEAD, C/V 2 - 12 WATT PAR 18 PHOTO QUARTZ LAMP'S.

NOTE:
CONNECT ALL EMERGENCY LIGHTING REMOTE HEADS TO CLOSEST BATTERY UNITS.
BATTERY UNIT SHALL BE WIRED TO THE SAME LIGHTING CIRCUIT/VOLTAGE AS AREA LIGHTING WHICH IT SERVES.
EXIT LIGHTS SHALL BE WIRED TO DEDICATED ELECTRICAL CIRCUIT.
BATTERY UNIT SHALL BE SIZED TO CARRY A MINIMUM OF ALL THE LOADS CONNECTED TO UNIT FOR MINIMUM OF 1/2 HOUR FOR LOW RISE AND 2 HOURS FOR HIGH RISE BUILDING.
EMERGENCY LIGHTING MANUFACTURERS TO BE EMERGENCY-LITE, LUMACEL, STANRO ETC/ELL OR APPROVED EQUAL.

ELECTRICAL LEGEND

- CEILING LIGHT OUTLET - 4" OCTAGONAL CONCRETE OR STANDARD TYPE Q, BOX (TYPE PER SCHEDULE) PANELBOARD (SURFACE OR RECESSED MOUNTED)
- Ⓢ 15A/20A 125V S.P.S.T. RESIDENTIAL GRADE SWITCH MOUNTED IN STANDARD DEEP OR SHALLOW O.B. DECORA WHITE, SWITCHES CONTROLLING FANS SHALL BE HORSEPOWER RATED. CORRENT TRIPPING SHALL WHICH BREAKER TRIPPING SWITCH
- Ⓢ 2-S.P.S.T. SWITCHES IN GANGED OUTLET BOX C/W DECORA WHITE COVERPLATE
- Ⓢ 15A/125V V/ GROUND DUPLEX RECEPTACLE APARTMENT GRADE-DECORA WHITE INCLUDING COVERPLATE SAME AS ABOVE BUT ONE-HALF OF RECEPTACLE CONTROLLED BY WALL SWITCH.
- Ⓢ 15A/125V SPILT V/ GROUND RECEPTACLE SERVED BY 2-15A CIRCUIT (3 WIRES) MOUNTED ABOVE KITCHEN COUNTER OR 1068 A.F.F. IF WALL MOUNTED-DECORA WHITE INCLUDING COVERPLATE
- Ⓢ 15A/125V V/ GROUND RECEPTACLE SERVING WASHER - EACH ON SEPARATE CIRCUIT.
- Ⓢ ELECTRIC STOVE RECEPTACLE - 50A/250V - 3 # 8 THW - 19MM C FEEDER OR BX- PROTECTED BY 40A CARTRIDGE FUSE OR 40A/2P CIRCUIT BREAKER - FLUSH MOUNTED.
- Ⓢ ELECTRIC RANGE RECEPTACLE - 30A/250V - 3 # 10 THW - 19MM C FEEDER OR BX FLUSH MOUNTED (240V/2P BREAKER).
- Ⓢ 15A GFCI CLASS 'A' RECEPTACLE SPECIAL OUTLET AS DEFINED.
- Ⓢ 20A 125V GFI RECEPTACLE MOUNTED ABOVE KITCHEN COUNTER OR 1068 A.F.F. IF WALL MOUNTED-DECORA WHITE INCLUDING COVERPLATE
- Ⓢ TELEPHONE/DATA OUTLET STD. OUTLET BOX C/W APPROPRIATE JACK COVER
- Ⓢ TELEVISION OUTLET.
- Ⓢ DISCONNECT SWITCH.
- Ⓢ SINGLE PHASE MOTOR THERMAL OVERLOAD SWITCH.
- Ⓢ SINGLE PHASE MOTOR.
- Ⓢ ELECTRIC HEATING REMOTE THERMOSTAT.
- Ⓢ FIRE ALARM ANNUNCIATOR/ PANEL, LOCATED IN MAIN LOBBY.
- Ⓢ WP DENOTES WEATHERPROOF DEVICE
- Ⓢ NF DENOTES UNFUSED
- Ⓢ ULC APPROVED TYPE SELF CONTAINED SMOKE STATON 120V/1/60 HERTZ/ION THE SMOKE ALARM-CARBON MONOXIDE COMBO IN SUITES CONNECTED TO UNSWITCHED CIRCUIT C/V BATTERY BACKUP. IN SUITES CONNECTED TO UNSWITCHED CIRCUIT C/V BATTERY BACKUP.
- Ⓢ ULC APPROVED TYPE SELF CONTAINED SMOKE STATON 120V/1/60 HERTZ/ION THE SMOKE ALARM IN SUITES CONNECTED TO UNSWITCHED CIRCUIT C/V BATTERY BACKUP.
- Ⓢ MANUAL FIRE ALARM PULL STATION
- Ⓢ 135° HEAT DETECTOR, RATE OF TEMPERATURE RISE AND FIXED TEMPERATURE DETECTION TYPE.
- Ⓢ 190° HEAT DETECTOR, FIXED TEMPERATURE DETECTION TYPE
- Ⓢ IONIZATION TYPE SMOKE DETECTOR CEILING OR DUCT TYPE TIE INTO ALARM SYSTEM
- Ⓢ FIRE ALARM HORN
- Ⓢ FIRE ALARM TWIN HORN
- Ⓢ FIRE ALARM SILENCER SWITCH IN SILE LIVING ROOM

- NOTE:
- 1) ALL APARTMENT/SUITE FIRE ALARM SPEAKERS TO HAVE INSIDE SILENCING SWITCH.
 - 2) ALL APARTMENT/SUITE RECEPTACLES IN BEDROOMS TO HAVE AFC TYPE CIRCUIT BREAKER.
 - 3) ALL RECEPTACLES INSTALLED WITHIN 1.0 METERS OF A KITCHEN SINK TO HAVE GFCI CIRCUIT BREAKER.
 - 4) ALL ELECTRICAL HEATERS C/V BUILT-IN THERMOSTAT (TRIPAD)
 - 5) ALL APARTMENT/SUITE RECEPTACLES TO BE THERMALLY RESISTANCE TYPE DESIGN (OPEN DESIGNERS) AND COUNTER TOPS.
 - 6) APARTMENT RECEPTACLES IN SILE KITCHEN KITCHEN COUNTER SHOULD NOT BE WIRED TO SILE CIRCUITS.



FIRST FLOOR PLAN

NO.	DESCRIPTION	DATE	BY
OCT. 3/14	GENERAL REVISIONS	H	
SEPT. 11/14	ISSUED FOR PERMIT	H	

MARK VOID ALL PRINTS DATED PREVIOUS TO FINAL DATE ABOVE

REVISIONS

CONTRACTOR MUST CHECK AND VERIFY ALL DIMENSIONS TO THE ENGINEER BEFORE PROCEEDING WITH WORK AND MUST BE RETURNED ON COMPLETION OF THE WORK. DRAWINGS ARE NOT TO BE SCALED

CONSULTING ENGINEERS

J. D. Hubbert & Associates
200 EVANS AVENUE, UNIT No.11
ETOBICOKE, ONTARIO, M8Z 1Y7, CANADA
TEL: (416) 291-8888 FAX: (416) 291-9168
E-MAIL: jdh@jdh-engineers.on.brn.ca

12 UNIT APARTMENT

79 LANSDOWNE STREET, WEST
PETERBOROUGH, ONTARIO

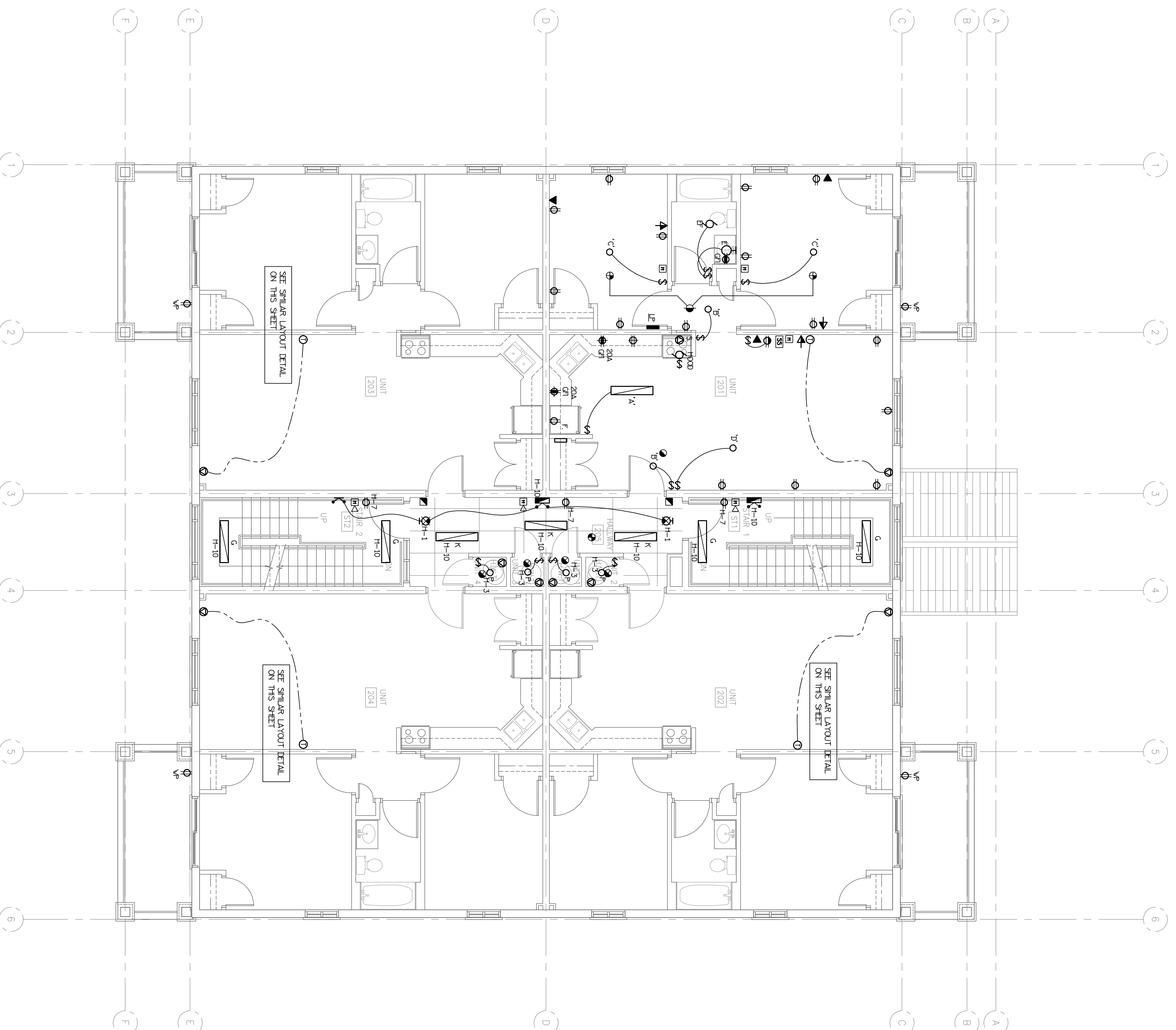
DRAWING TITLE: **FIRST FLOOR PLANS**

PROJECT TITLE: **ELECTRICAL**

DRAWN BY: AG	CHECKED BY: JDH	SCALE: 3/16" = 1'-0"
DATE: JUNE 2014	PROJECT NUMBER: 4-4399	DRAWING NUMBER: E-2

LIGHTING FIXTURE SCHEDULE

TYPE	DESCRIPTION	VOLTAGE	LAMPS PER FIXTURE	MFG.		REMARKS
				NO.	WATT TYPE	
A	FLUORESCENT LIGHT FIXTURE LITOMIA OR EQUAL	120	2	32	FO3218	VV SURFACE
B	HALLWAY/VALK-IN CLOSET ROUND FLUSH TO CEILING FIXTURE C/V	120	1	60	A-14	VV SURFACE
C	WALL SCENE EQUAL	120	1	13	CTL	VV SURFACE
D	DINING LIGHT FIXTURE LITOMIA OR EQUAL	120	3	13	TT	VV PENDANT
E	BATHROOM WALL FIXTURE LITOMIA OR EQUAL	120	4	25	G16	CL WALL
G	1.4" FLUORESCENT FIXTURE W/ PARABOL LENS LITOMIA OR EQUAL	120	2	32	FO3218	3500K SURFACE
H	1" FLAT ROUND VANGUARD RESISTANT LIGHT; TRIL SERIES OR EQUAL	120	1	50	TH	TH SURFACE
F	LED/ON OR EQUAL HOLLOW LITOMIA OR EQUAL	120	1	60	A19	IF SURFACE
J	BALCONY CEILING LIGHT LITOMIA OR EQUAL	120	1	60	A19	IF SURFACE
K	1.4" FLUORESCENT FIXTURE K12 LENS LITOMIA OR EQUAL	120	2	32	FO3218	3500K T-BAR
X	EXIT LIGHT ULTRACELL LINE SERIES OR EQUAL	120		3.5	LED	VALL OR CEILING
						ARROWS, S/F, D/F



LOAD DESCRIPTION	BRK	CIRCUITS	BRK	LOAD DESCRIPTION
LIGHTING	15A	1	2	SPILT RECEPTACLE **
	15A	3	4	3 WIRES
RECEPTACLES	15A	5	6	GFI 20A RECEPTACLE
	15A	7	8	20A
GFI RECEPTACLE	15A	9	10	GFI 20A RECEPTACLE
RANGE	40A	11	12	FDXCE
(3 #8)	2"	13	14	DH1 FANS
CONTROL VALVE	15A	15	16	SMOKE DETECTOR - UNSWITCHED
SMOKE ALARM	15A	17	18	UTILITY RECEPTACLE
	15A	19	20	228V ELEC. HOT WATER TANK
SPRINK	15A	21	22	SPRINK
SPRINK	15A	23	24	SPRINK

- NOTES:
- ** IN APPLICABLE UNITS ONLY REFER TO UNIT'S LAYOUTS.
 - ** IN APPLICABLE UNITS ONLY REFER TO UNIT'S LAYOUTS.
 - PANELS SHALL BE SUITABLE FOR THE USE OF DOUBLE BREAKERS WHICH SHALL BE USED SHOULD THE ACTUAL PROPORTION OF REQUIRED CIRCUITS/EMPTY SPACE EXCEED CODE REQUIREMENTS.
 1. IN PUBLIC CORRIDORS, PROVIDE CLEANING RECEPTACLES, SMOKE DETECTORS AND F.A. HORNS EVERY 9m.
 2. IN ADDITION TO ABOVE, IN AREA AROUND SUITE CORRIDORS, PROVIDE A TYPE 'K' LIGHT FIXTURE AT EACH SUITE DOOR AND ALONG WALL SO THAT WALL MOUNTED LIGHTS ARE NO MORE THAN 8' APART.

- NOTE:
- 1) ALL APARTMENT/SUITE FIRE ALARM DEVICES TO HAVE NAITE SENDING SWITCH.
 - 2) ALL APARTMENT/SUITE RECEPTACLES IN BEDROOMS TO HAVE AFCI TYPE CIRCUIT BREAKER.
 - 3) ALL RECEPTACLES INSTALLED WITHIN 1.0 METERS OF A KITCHEN SINK TO HAVE GFCI CIRCUIT BREAKER.
 - 4) ALL ELECTRICAL HEATERS C/V BAL--N THERMOSTAT (TYPICAL)
 - 5) ALL APARTMENT/SUITE RECEPTACLES TO BE THERMOSTAT RESISTANCE TYPE EXCEPT KITCHEN EQUIPMENTS AND COUNTER TOPS.
 - 6) ADJACENT RECEPTACLES IN SUITE KITCHEN KITCHEN COUNTER SHOULD NOT BE WIRED TO SAME CIRCUITS.

REVISIONS

CONTRACTOR MUST CHECK AND VERIFY ALL DIMENSIONS TO THE DRAWING BEFORE PROCEEDING WITH WORK. THIS DRAWING IS THE PROPERTY OF THE ENGINEERS AND MUST BE RETURNED ON COMPLETION OF THE WORK. DRAWINGS ARE NOT TO BE SCALED

CONSULTING ENGINEERS

J. D. Hubbert & Associates
200 EVANS AVENUE, UNIT No.11
ETOBICOKE, ONTARIO, M8Z 1Y7, CANADA
TEL: (416) 490-2626 FAX: (416) 291-8168
E-MAIL: jdh@jdhengr.com

SECOND FLOOR PLANS

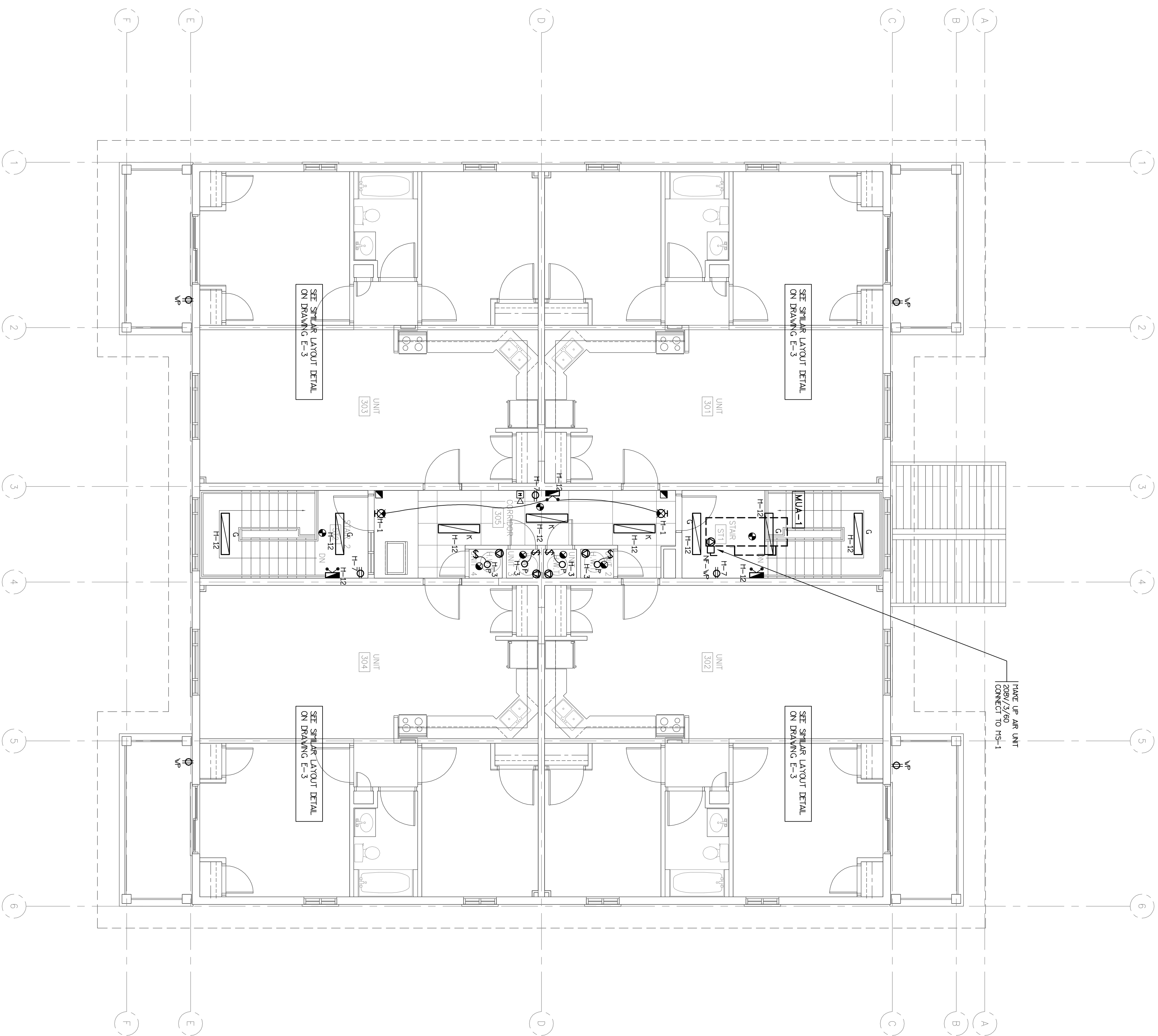
12 UNIT APARTMENT

79 LANSDOWNE STREET WEST
PETERBOROUGH, ONTARIO

DESIGNED BY	AG	CHECKED BY	JDH
DATE	JUNE 2014	PROJECT NUMBER	4-4399
SCALE	3/16" = 1'-0"	DRAWING NUMBER	E-3

OF 6

SECOND FLOOR PLAN



- NOTE:**
- 1) ALL APARTMENT/SITE FIRE ALARM DEVICES TO HAVE RESIDE BATTERY SWITCH.
 - 2) ALL APARTMENT/SITE RECEPTACLES IN BEDROOMS TO HAVE AFCI TYPE CIRCUIT BREAKER.
 - 3) ALL RECEPTACLES INSTALLED WITHIN 1.0 METERS OF A KITCHEN SINK TO HAVE GFCI CIRCUIT BREAKER.
 - 4) ALL ELECTRICAL HEATERS C/V BUILT-IN THERMOSTAT (TYPICAL)
 - 5) ALL APARTMENT/SITE RECEPTACLES TO BE TAPPERCUT RESISTANCE TYPE EXCEPT TROUBLE EQUIPMENTS AND COUNTER TOPS.
 - 6) ADDITIONAL RECEPTACLES IN SUITE KITCHEN KITCHEN COUNTER SHOULD NOT BE ADDED TO SUE CRACKS.

REVISIONS

NO.	DATE	DESCRIPTION	BY
1	OCT. 31/14	GENERAL REVISIONS	H
2	SEPT. 11/14	ISSUED FOR PERMIT	H

CONTRACTOR MUST CHECK AND VERIFY ALL DIMENSIONS TO THE ENGINEERS BEFORE PROCEEDING WITH WORK AND THIS DRAWING IS THE PROPERTY OF THE ENGINEERS AND DRAWINGS ARE NOT TO BE SCALED

MARK VOID ALL PRINTS DATED PREVIOUS TO FINAL DATE ABOVE

J. D. Hubbert & Associates
 CONSULTING ENGINEERS

200 EVANS AVENUE, UNIT No.11
 ELDORADO, ONTARIO, M8Z 1T7, CANADA
 TEL: (416) 291-9168 FAX: (416) 291-9168
 E-MAIL: jdh@jdhengr.com

THIRD FLOOR PLANS

12 UNIT APARTMENT

PROJECT TITLE

ELECTRICAL

79 LANSOWNE STREET WEST
 PETERBOROUGH, ONTARIO

DRAWN BY: AG
 CHECKED BY: JDH

SCALE: 3/16" = 1'-0"

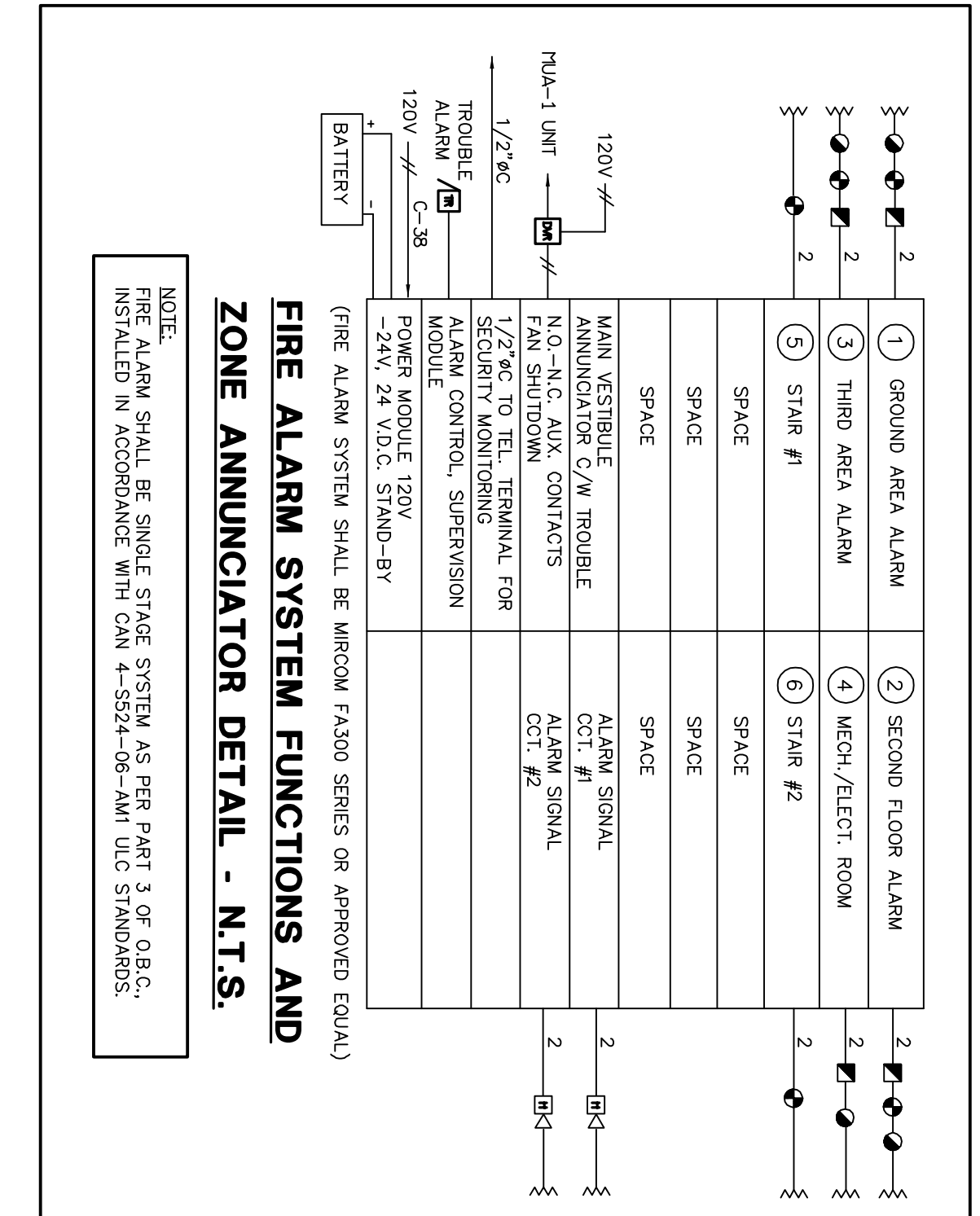
DATE: JUNE 2014

PROJECT NUMBER: 4-4399

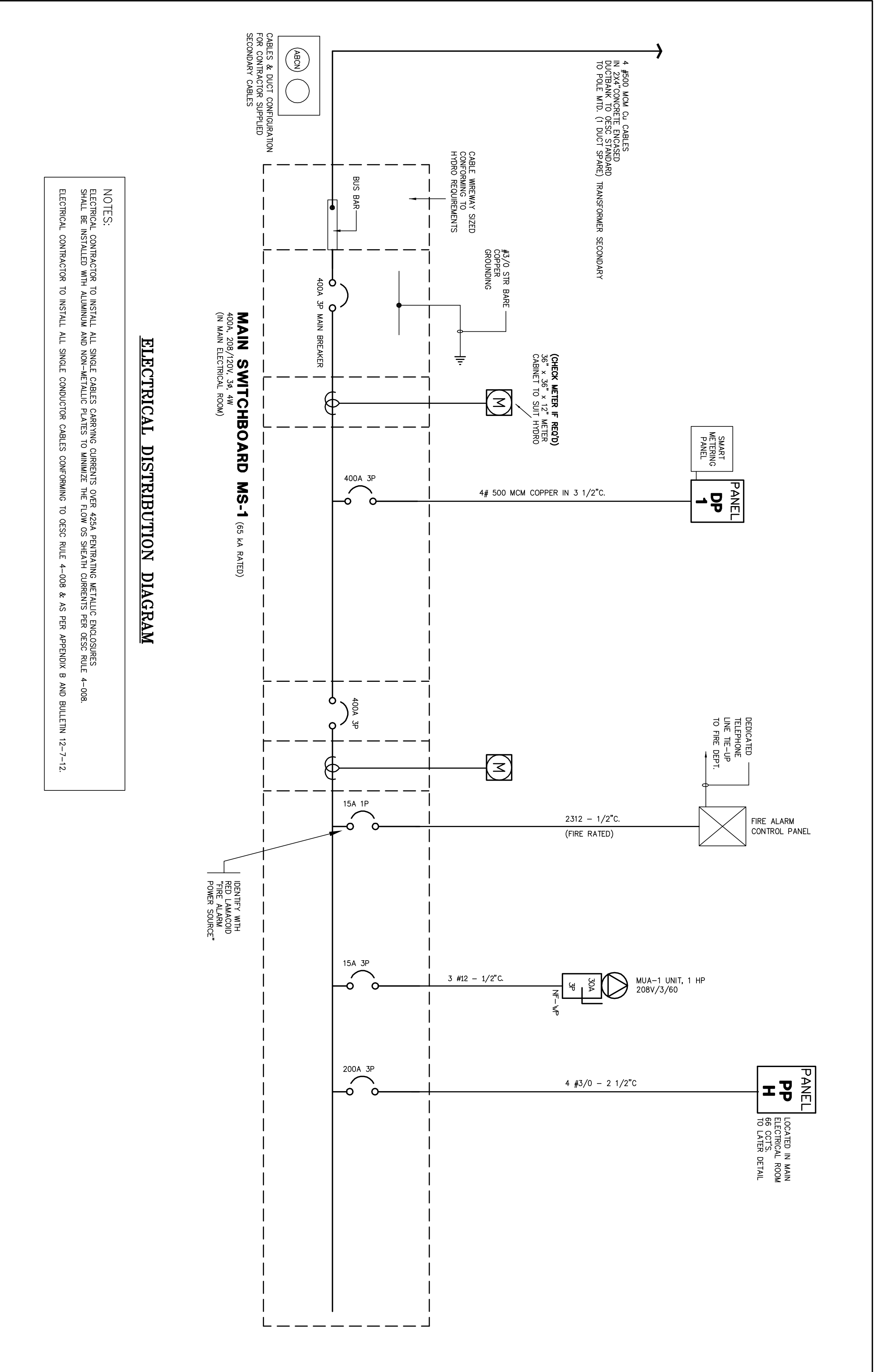
DRAWING NUMBER: E-4

Estimated Load Calculation		
Average floor area of units larger than 90 sqm. (Type A) = 120 sqm		
Code Section: 8-202 (1) (d)		
Apartment & Similar Buildings		
1. The minimum capacity of service or feeder conductors from a main service supplying loads in dwelling units shall be based on the following or otherwise 60A.		
Input parameters	Date	Remarks
No. of units LARGER THAN 90 sqm. (Type A)	12	
H.W. Tank Heating load per unit	2,250	
Electric Range load per unit	6,000	
Code Section 8-202(1)		
Load Description	(Type A)	Unit loads
a) First 45 sqm @ 3000 W		3,500
b) Additional 1500 W for each 45 sqm or portion thereof		1,500
c) Heating load per (Section 62) or portion thereof in excess of initial 90 sqm		2,250
d) H.W. Tank Heating load		6,000
e) Electric Range (First 12kW)		0
f) Balance @ 40%		0
g) W. Additional Loads @ 25%		0
Electric Hot Water Tank		
Total Load (Units):		13,250
Reference Current @208/120V, 3-ph, 4-wire:		79
Size of Panel in dwelling units (Amps):		100

Code Section: 8-202(3)		
Apartment & Similar Buildings		
1. The minimum capacity of service or feeder conductors from main service supplying two or more dwelling units shall be based on the calculated load from section (1) (d) & the following.		
Type "A" units (> 90 sqm)		No. of Units
Type "B" units (< 90 sqm)		12
Unit Loads		
a) Largest unit @ 100%		13,250
b) Next two units @ 40%		10,260
c) Next 15 units @ 25%		23,144
Suite Loads		
b) Heating load per (Section 62)		64,199
c) one Cooling load		N/A
d) MISCELLANEOUS LOADS - COMMON AREAS		
General Lighting		4,500
Mechanical Power		20,000
Miscellaneous		7,000
Sub-total (misc. loads)		31,500
Total Load (units):		
		95,899 W
Reference Current @ 208/120V, 3-ph, 4-wire:		332.5
Service Size @ 208/120V, 3-ph, 4-wire:		400 Amps
MIN. 65 KA RATED		



PANEL IDENT.	LOAD DESCRIPTION	SERVICE TRANS. HOURING	BRK	CIRCUITS	BRK	LOAD DESCRIPTION	NOTES
DP-1	FEDS SUITE PANEL UNIT #101	100A	1	2	100A	FEDS SUITE PANEL UNIT #101	
	3x3 N-1-1/2°C + CND	2	3	4	2	3x3 N-1-1/2°C + CND	
	FEDS SUITE PANEL UNIT #102	100A	5	6	100A	FEDS SUITE PANEL UNIT #102	
	3x3 N-1-1/2°C + CND	2	7	8	2	3x3 N-1-1/2°C + CND	
	FEDS SUITE PANEL UNIT #103	100A	9	10	100A	FEDS SUITE PANEL UNIT #103	
	3x3 N-1-1/2°C + CND	2	11	12	2	3x3 N-1-1/2°C + CND	
	FEDS SUITE PANEL UNIT #104	100A	4	10	100A	FEDS SUITE PANEL UNIT #104	
	3x3 N-1-1/2°C + CND	2	13	14	2	3x3 N-1-1/2°C + CND	
	FEDS SUITE PANEL UNIT #201	100A	17	18	100A	FEDS SUITE PANEL UNIT #201	
	3x3 N-1-1/2°C + CND	2	19	20	2	3x3 N-1-1/2°C + CND	
	FEDS SUITE PANEL UNIT #202	125A	21	22	100A	FEDS SUITE PANEL UNIT #202	
	3x3 N-1-1/2°C + CND	2	23	24	2	3x3 N-1-1/2°C + CND	
	FEDS SUITE PANEL UNIT #203	100A	25	26	100A	FEDS SUITE PANEL UNIT #203	
	3x3 N-1-1/2°C + CND	2	27	28	15A	ELECTRIC HEATING REFERENCE VOLTAGE	
	FEDS SUITE PANEL UNIT #204	100A	29	30	100A	FEDS SUITE PANEL UNIT #204	
	3x3 N-1-1/2°C + CND	2	31	32	2	3x3 N-1-1/2°C + CND	
	FEDS SUITE PANEL UNIT #301	100A	33	34	100A	FEDS SUITE PANEL UNIT #301	
	3x3 N-1-1/2°C + CND	2	35	36	2	3x3 N-1-1/2°C + CND	
	FEDS SUITE PANEL UNIT #302	100A	37	38	100A	FEDS SUITE PANEL UNIT #302	
	3x3 N-1-1/2°C + CND	2	39	40	2	3x3 N-1-1/2°C + CND	
	FEDS SUITE PANEL UNIT #303	100A	41	42	100A	FEDS SUITE PANEL UNIT #303	
	3x3 N-1-1/2°C + CND	2	43	44	2	3x3 N-1-1/2°C + CND	
	FEDS SUITE PANEL UNIT #304	100A	45	46	100A	FEDS SUITE PANEL UNIT #304	
	3x3 N-1-1/2°C + CND	2	47	48	2	3x3 N-1-1/2°C + CND	



- NOTES:**
- ELECTRICAL CONTRACTOR TO INSTALL ALL SINGLE CABLES CARRYING CURRENTS OVER 45A PENETRATING METALLIC ENCLOSURES SHALL BE INSTALLED WITH ALUMINIUM AND NON-METALLIC PLATES TO MINIMIZE THE FLOW OF SHEATH CURRENTS PER CESC RULE 4-008.
- ELECTRICAL CONTRACTOR TO INSTALL ALL SINGLE CONDUCTOR CABLES CONFORMING TO CESC RULE 4-008 & AS PER APPENDIX B AND BULLETIN 12-7-12.

PANEL IDENT.	LOAD DESCRIPTION	SERVICE TRANS. HOURING	BRK	CIRCUITS	BRK	LOAD DESCRIPTION	NOTES
LP-H	EXIT LIGHT	15A	1	2	15A	EXIT LIGHT	
	15A	3	4	15A	EXTENSION LITC		
	15A	5	6	15A	CHANG'Y LITC		
	15A	7	8	15A	CORR. LITG - 1ST FL.		
	15A	9	10	15A	CORR. LITG - 2ND FL.		
	15A	11	12	15A	CORR. LITG - 3RD FL.		
	15A	13	14	30A	ELECTRIC F/THR		
	208V/1PH	2	15	2	208V/1PH		
	15A	17	18	15A	WASHER RECEPT.		
	15A	19	20	30A	DRYER RECEPT.		
	208V/1PH	2	21	22	2		
	15A	23	24	15A	DRY FAN		
	15A	25	26	15A	PUMP P-1		
	208V/1PH	2	27	28	2	PUMP P-3	
	208V/1PH	2	29	30	2	208V/1PH	
	2	31	32	2	208V/1PH		
	15A	33	34	15A	SMRT/VALL LITC		
	35	35	36	15A	DOOR OPERATOR		
	37	37	38	15A	DOOR OPERATOR		
	39	39	40	3	3		
	41	41	42	4	4		
	43	43	44	4	4		
	45	45	46	4	4		
	47	47	48	4	4		

CONTRACTOR MUST CHECK AND VERIFY ALL DIMENSIONS TO THE DIMENSIONS SHOWN ON THESE DRAWINGS. THIS DRAWING IS THE PROPERTY OF THE ENGINEERS AND MUST BE RETURNED ON COMPLETION OF THE WORK. DRAWINGS ARE NOT TO BE SCALED.

REVISIONS

NO.	DATE	BY	REVISION
1	OCT 30/14	AG	GENERAL REVISION
2	NOV 17/14	AG	ISSUED FOR PERMIT
3	JUN 2014	JDH	

MARK VOID ALL PRINTS DATED PREVIOUS TO FINAL DATE ABOVE

J. D. Hubbert & Associates CONSULTING ENGINEERS

200 EVANS AVENUE, UNIT No.11
ETOBICOKE, ONTARIO M8Z 1Y7, CANADA
TEL: (416) 251-3440 FAX: (416) 251-9168
E-MAIL: jdh@jdhengr.com

DIAGRAM

12 UNIT APARTMENT

79 LANSLOWNE STREET, WEST PETERBOROUGH, ONTARIO

PROJECT NUMBER: **4-4399** DRAWING NUMBER: **E-5** OF 6

DATE: JUNE 2014