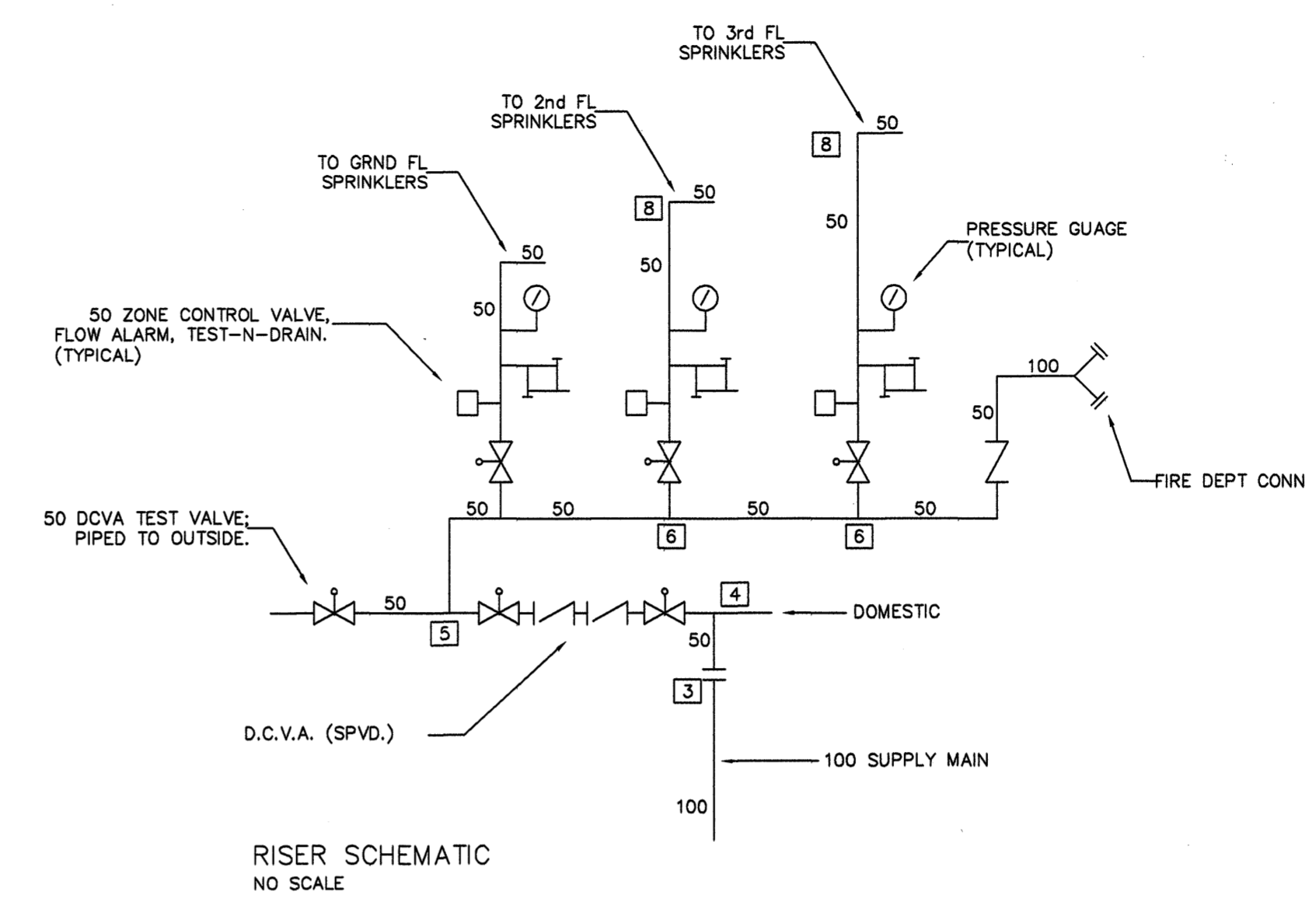


**SPRINKLER LEGEND:**

SYMBOL	SIZE/K-FACTOR	TEMP	TYPE	MFG.	MODEL
●	-1/2" (K=3.0)	155°F	VIKING FREEDOM RESIDENTIAL PENDENT SPRINKLER.	VIKING	VK470
▶	-1/2" (K=4.0)	155°F	VIKING FREEDOM RESIDENTIAL SIDEWALL SPRINKLER.	VIKING	VK486
⊙	-1/2" (K=5.6)	155°F	VIKING QUICK RESPONSE PENDENT SPRINKLER.	VIKING	VK302



**HYDRAULIC DATA PLATE INFORMATION**

LOCATION:	THIRD FLOOR	SECOND FLOOR	GROUND FLOOR
No. of SPKRS:	4	4	8
DENSITY:	13 gpm/head	13 gpm/head	0.15 gpm/sq.ft.
DESIGN AREA:	4 Heads.	4 Heads.	800 sq.ft.
GPM DISCHARGE:	63.28 gpm	52.28 gpm	140.96 usgpm
PSI @ B.O.R.:	50.99 psi	40.88 psi	31.88 psi

**NOTES:**

REFERENCES: O.B.C; NFPA 13R.  
 DESIGN CRITERIA: NFPA 13R.  
 DESIGN REQUIREMENTS: RESIDENTIAL:  
 -FLOW 4 PENDENT SPRINKLERS AT MINIMUM 13 usgpm each.

● = 1/2" 155 F RESIDENTIAL WHITE PENDENT ( K=3.0)  
 VIKING FREEDOM MODEL VK470  
 ( DESIGNED TO 16'-0" x 16'-0" COVERAGE )

▶ = 1/2" 155 F RESIDENTIAL WHITE SIDEWALL ( K=4.0)  
 VIKING FREEDOM MODEL VK486  
 ( DESIGNED TO 16'-0" x 16'-0" COVERAGE )

DESIGN REQUIREMENTS: MECH; ELECT; GARBAGE.  
 Ordinary Hazard Group 1:  
 Density: 0.15 usgpm/sq.ft.  
 Area: 1500 sq.ft.  
 Hoses: 250 usgpm

Water Supply:  
 Static: 66 psi. Flow: 960 usgpm @ 62 psi residual.

**PRODUCTS:**  
 All components to be NFPA and FM approved.

**Pipe and Fittings:**  
 -Blk Sch. 40 steel pipe, threaded.  
 -Blk C.I. screwed fittings.  
 -Blk L.W. steel pipe, roll-grooved.  
 -Grooved couplings and fittings.  
 -C.P.V.C. pipe and fittings.

**Valves:**  
 -All Control Valves to be supervised.  
 -All Control Valves to be FM approved, ULC listed for fire protection service.  
 -All Control Valves to be Indicating Type; to NFPA 13R Standards.  
 -All Drain Valves and miscellaneous trim valves to be brass, threaded.  
 -All Check Valves to be rubber-faced.

**Pipe Hangers:**  
 -All pipe hangers to be FM approved; ULC listed for fire protection service.  
 -All pipe hanger assemblies to be to NFPA 13R Standards.

Maximum distance between hangers:  
**STEEL PIPE:** 1": 12'-0"  
 1 1/2"-4": 15'-0"  
**CPVC PIPE:** 1": 6'-0"  
 1 1/2": 7'-0"  
 2": 8'-0"  
 3": 10'-0"

**Sprinkler Heads:**  
 -All sprinkler heads to be FM approved; ULC listed for fire protection services.  
 -All sprinkler heads in un-finished areas to be brass finish.

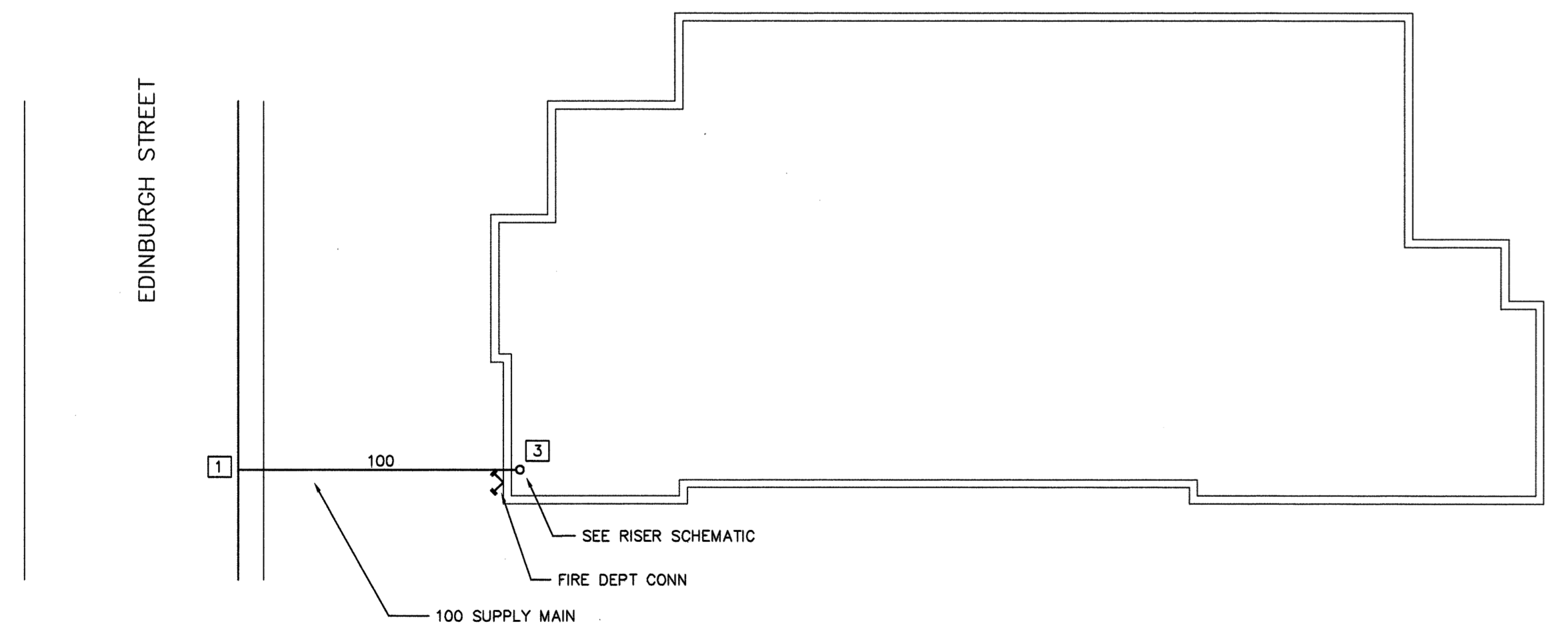
**Wet Pipe System:**  
 -Control Valve, supervised.  
 -Flow Alarm.  
 -Pressure Gauge.  
 -Main Drain.  
 -All supervisory and alarm switches to be to FM approved, ULC listed for fire protection services, with normally open and normally closed contacts and supervisory capability.  
 -All supervisory wiring and alarm wiring to be completed by others.

**Fire Department Connection:**  
 -2 1/2 x 2 1/2 x 4 Reg. Mount.

**Signs:**  
 -All control valves, switches, drain valves to be equipped with signs, to NFPA 13R Standards.

**Spare Head Cabinet:**  
 -Spare head cabinet to be installed on wall near Alarm Valve station.  
 -Spare head cabinet stock (6) spare heads, and wrench.

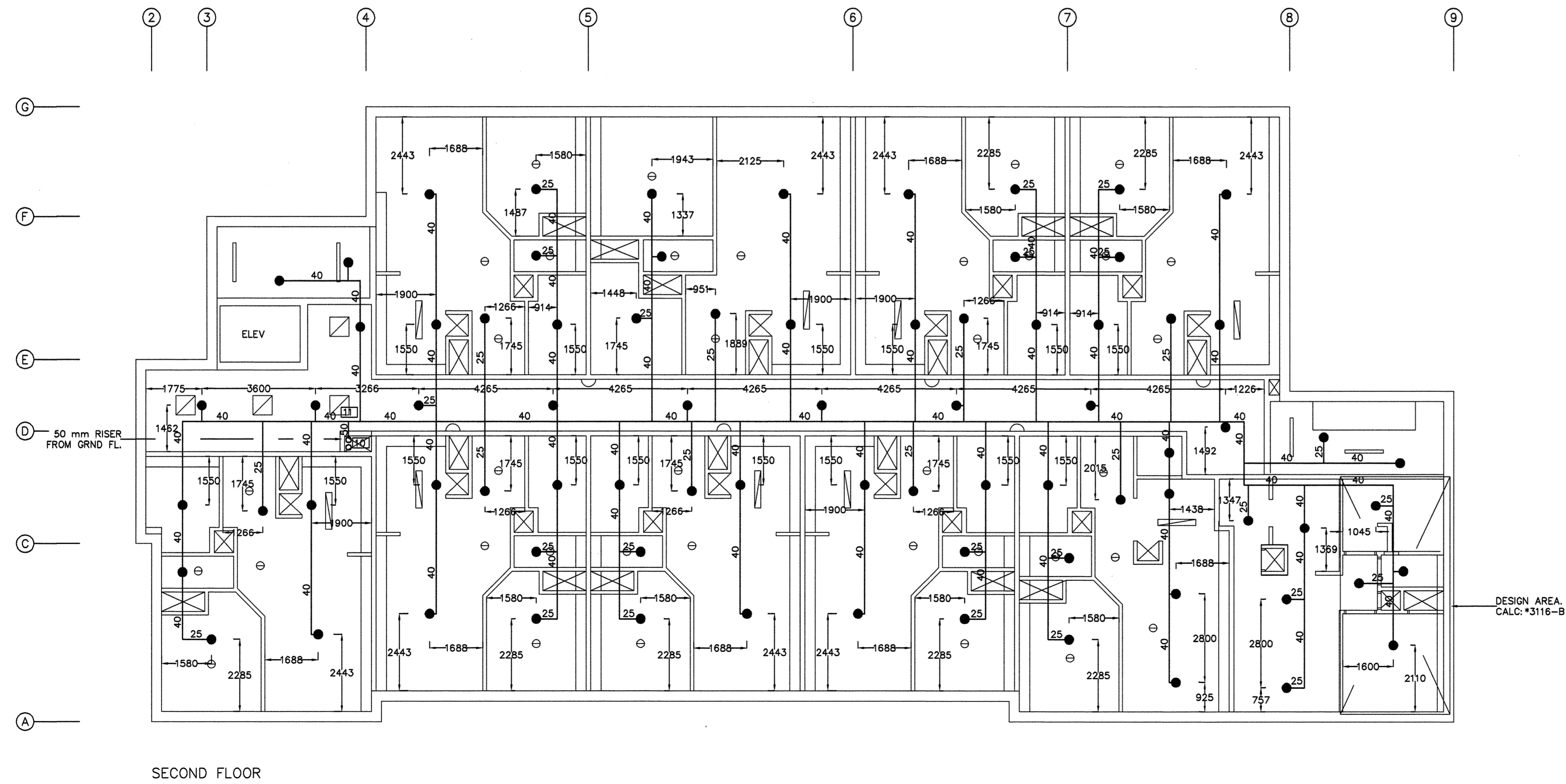
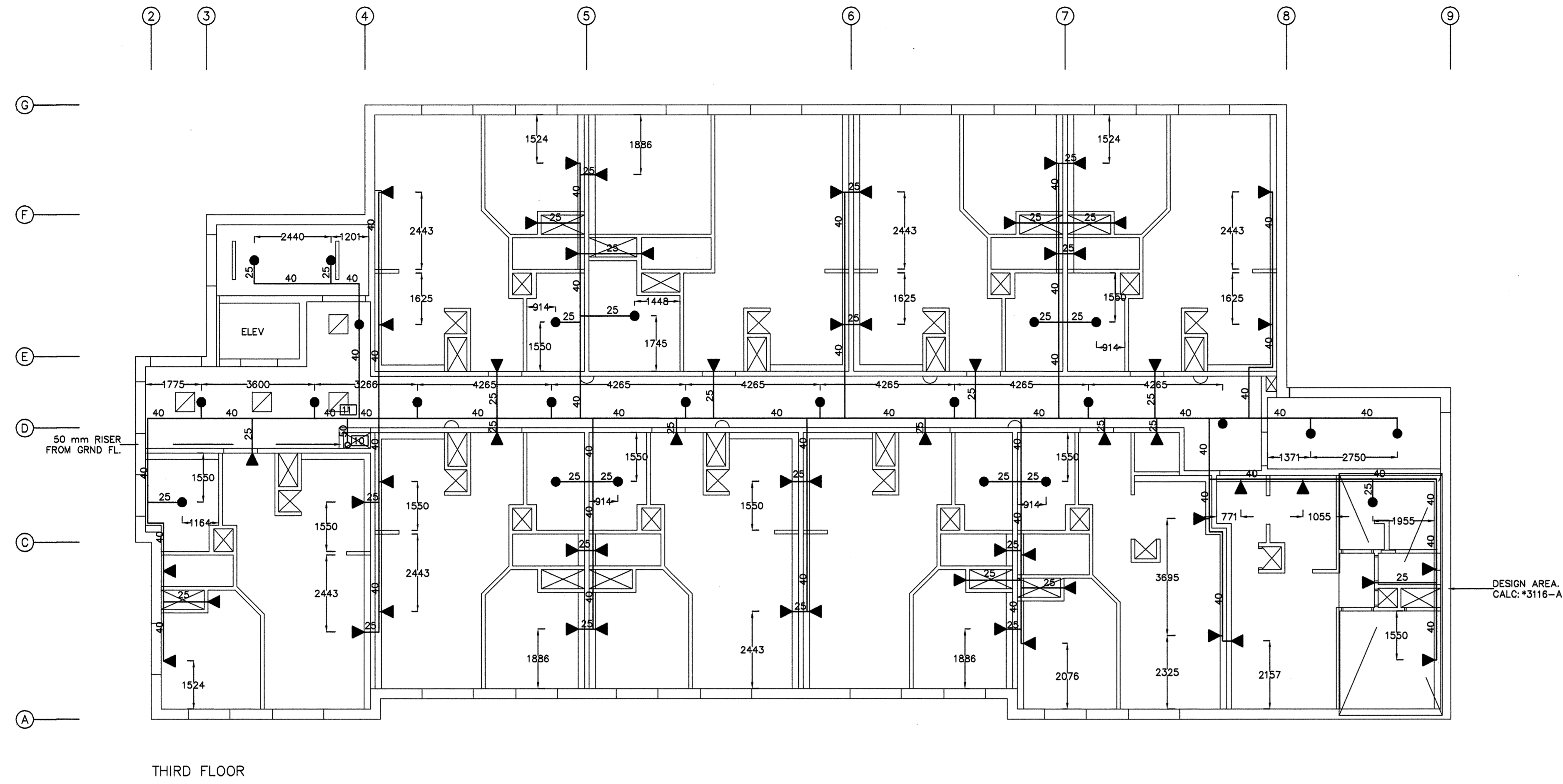
**INSTALLATION:**  
 -All piping and components to be installed to NFPA 13R Standards, to manufacturers requirements, and to project specifications.  
 -All piping and components to be tested to NFPA 13R Standards.  
 -All leaks to be repaired and piping re-tested.  
 -All components failing tests to be replaced.  
 -Contractors Material and Test Certificate to be completed and submitted to owners representative.



**SITE SERVICE PLAN**  
 SCALE- 1:200



<b>PROJECT:</b> PROPOSED 28 UNIT APARTMENT 198 EDINBURGH STREET PETERBOROUGH, ONTARIO.	<b>CONTR' No:</b> B-15-A-3116
<b>SPRINKLERS</b>	<b>SCALE:</b> 1:100 <b>DRWN:</b> BNC
<b>TITLE:</b> NOTES, RISER SCHEMATIC, SITE SERVICE, FIRST FLOOR PIPING.	<b>CH'KD:</b> D.J.
<b>DESIGNED:</b> B T NICHOLL-CARNE 738 MARGARET WAY, KINGSTON, ONTARIO K7K 0C1 TEL: 1-613-530-2295 FAX: 1-613-530-2296 E-MAIL: borryn@kingston.net	<b>DATE:</b> NOV. 6, 2015. <b>DRWG No:</b> SP 101 <b>REV:</b> 0
<b>ARCHITECT:</b> GREGG GORDON ARCHITECT 516 HUNTER STREET WEST PETERBOROUGH, ONTARIO. K9H 2N1 TEL: 1-705-876-6548 FAX: 1-705-876-9206	



PROJECT: PROPOSED 28 UNIT APARTMENT 198 EDINBURGH STREET PETERBOROUGH, ONTARIO.	CONTR'T No: B-15-A-3116
SCALE: 1:100	DRWN: BNC
TITLE: SECOND FLOOR PIPING; THIRD FLOOR PIPING.	CH'KD: D.J.
DESIGNED: B T NICHOLL-CARNE 738 MARGARET WAY, KINGSTON, ONTARIO K7K 0C1 TEL: 1-613-530-2295 FAX: 1-613-530-2296 E-MAIL: barryn@kingston.net	DATE: NOV. 6, 2015.
	DRWG No: SP 102
	REV: 0
ARCHITECT: GREGG GORDON ARCHITECT 516 HUNTER STREET WEST PETERBOROUGH, ONTARIO. K9H 2N1 TEL: 1-705-876-6548 FAX: 1-705-876-9206	