

## SITE INSTRUCTION # 6

To: Barry Whitnell  
Construction Manager

Project: McRae Building  
553 Bonaccord Street,  
Peterborough, Ontario

Attn: Barry Whitnell

Project No: 16033

Date: November 19, 2018

*Please proceed with the following clarifications or changes to the Contract Documents. These clarifications or changes, proposed to modify the original contract documents, are not expected to affect the Contract Price or the Contract Schedule. All materials and workmanship are to be as described in the Contract Documents unless otherwise stated.*

### DESCRIPTION:

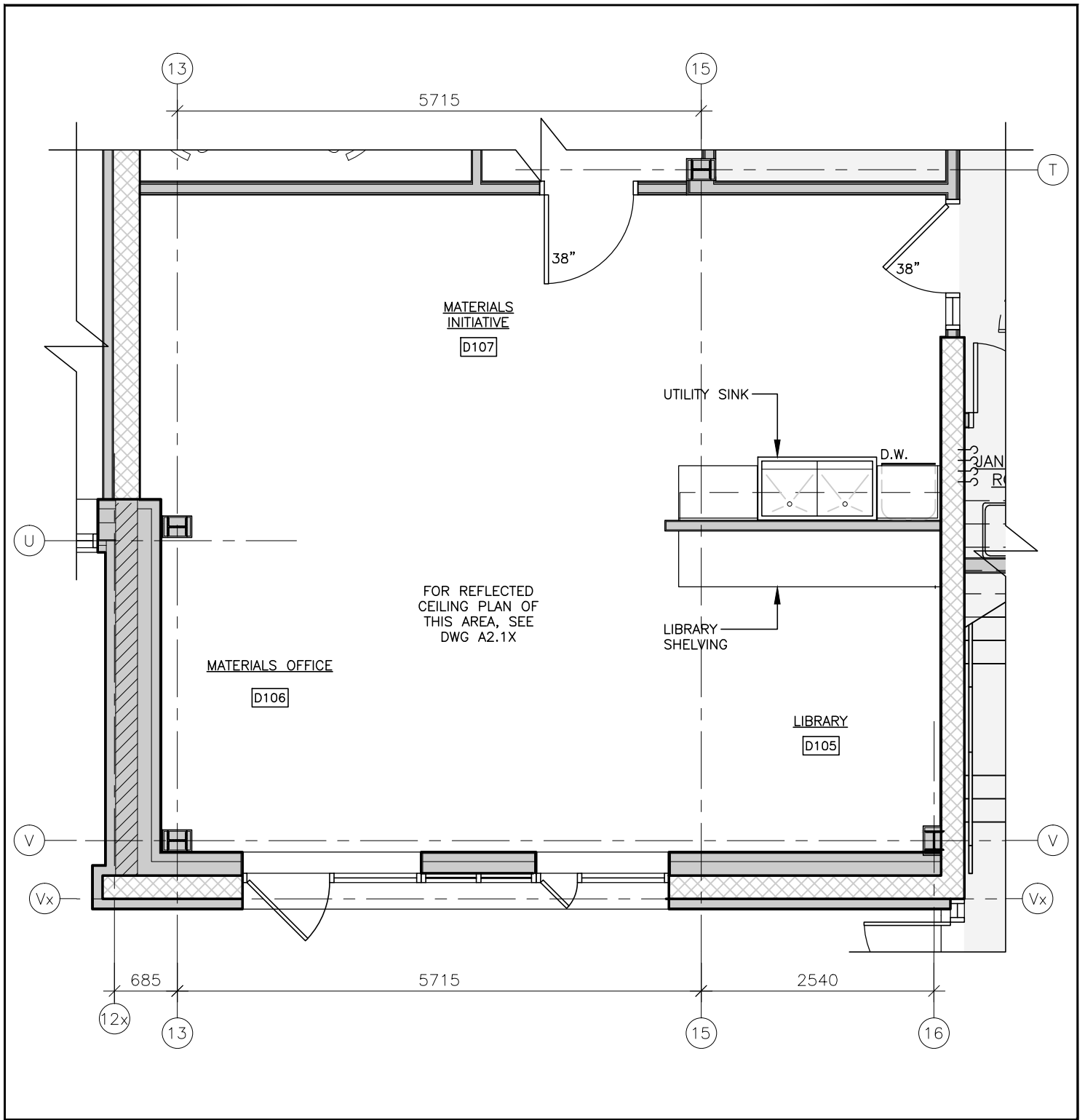
#### 1. Materials Initiative/Materials Office Space:

The Tenant has requested that the two spaces, presently shown on drawing A2.1U as the Materials Office D106 and the Materials Initiative D107, be reversed such that the Materials Office space can be on the exterior wall directly next to the window and the Materials Initiative (work space) can be closer to the two entry doors. This is now shown on the attached revised architectural drawing SK-17. You will see that the Utility Sinks and Dishwasher move to the other side of the wall but the plumbing for these fixtures remain in the same wall. For this reason no plumbing drawings are revised to show this change. Similarly, the mechanical HVAC is not altered by this change and therefore there are no revised mechanical HVAC drawings provided either. The electrical drawings are affected. Included with this Site Instruction #6 is the Engineering Site Instruction #E1 prepared by Berthelot Engineering Ltd. including Drawing SK-E1. There is one additional outlet required: enclosed for the purpose of the additional outlet is an Electrical CCN #1.

PREPARED BY THE CONSULTANT: Gregg Gordon Architect



Signed: \_\_\_\_\_ Title: Contract Administrator Date: November 19, 2018  
Gregg Gordon, O.A.A.



|   |                 |  |   |  |                        |
|---|-----------------|--|---|--|------------------------|
| SHEET TITLE:<br><b>DAYCARE MATERIALS/<br/>LIBRARY AREAS</b>                                 |                 | CLIENT:<br><b>PETERBOROUGH HOUSING<br/>CORPORATION</b> |   | PROJECT:<br><b>McRAE PROPERTY<br/>DEVELOPMENT<br/>553 BONACCORD ST.<br/>PETERBOROUGH, ON</b> |                        |
| SEAL:<br> | DRAWN BY:       | PROJECT #: 16033                                       | <b>Gregg Gordon Architect</b><br>516 Hunter Street West    Tel. (705) 876-6548<br>Peterborough, Ontario    Fax. (705) 876-9206<br>K9H 2N1 | PLOT DATE:<br>Nov. 19, 18  | DWG #:<br><b>SK-17</b> |
| CHECKED BY:   | SCALE: AS NOTED | DATE: APR 2016   |   | REV #:<br>-  |                        |

**BERTHELOT ENGINEERING LTD.**  
2193 Lynhaven Rd, Peterborough, Ontario, Canada K9K 1W8  
Tel: (705) 775-1517 email: pberthelot@bertheloteng.com

## **ENGINEERING SITE INSTRUCTION E1**

**TO:** Gregg Gordon Architect  
516 Hunter St W  
Peterborough, ON  
K9H 2N1

**SI. No.:** E1  
**PROJECT No.:** 115  
**PROJECT NAME:** McRae Property Development  
**DATE:** October 24, 2018

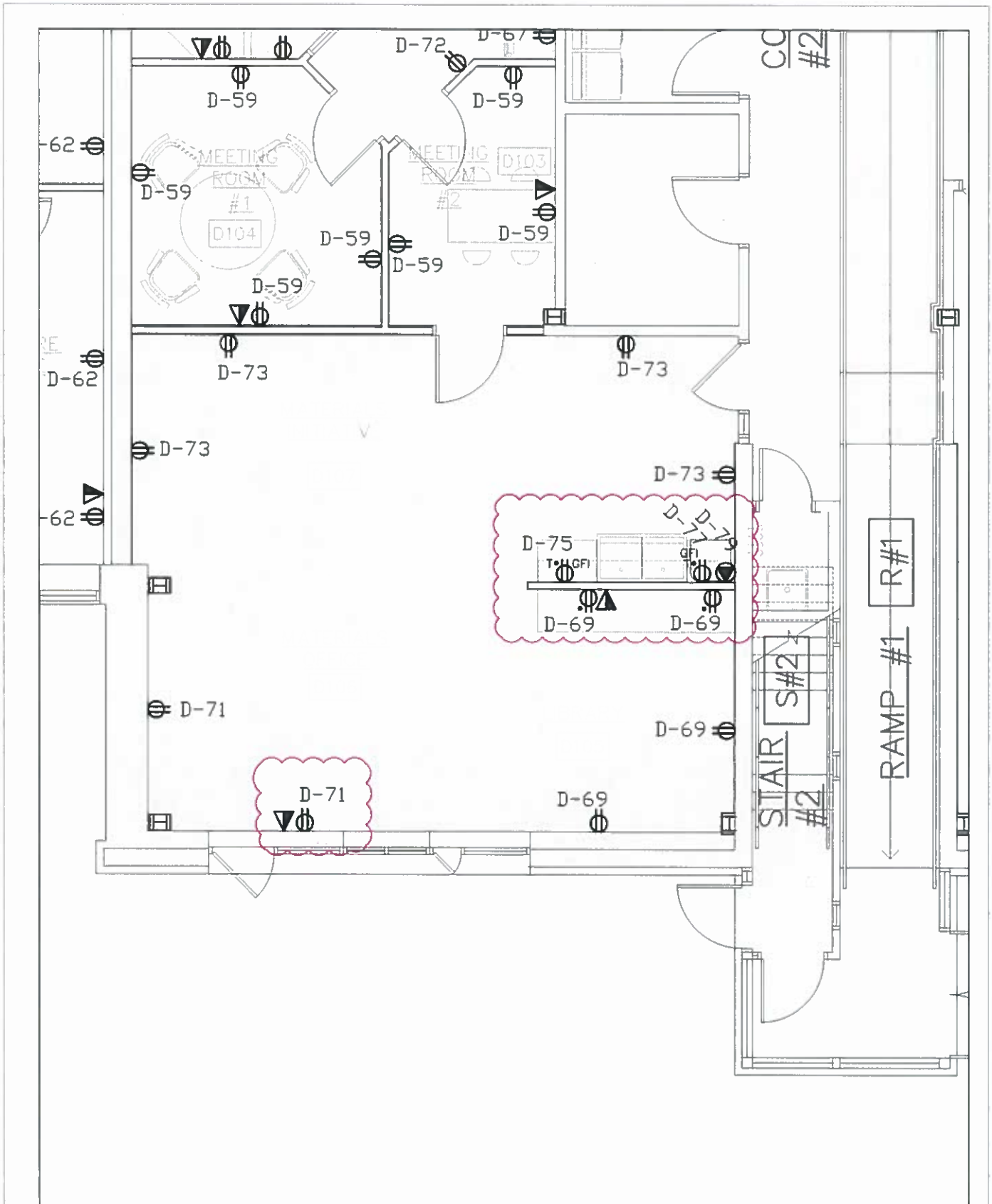
### **ATTENTION: Gregg Gordon**

The following are authorized changes for this project. Contractor shall amend the contract documents to suit. All material and workmanship are to be in accordance to the Contract Documents unless otherwise stated. Berthelot Engineering Ltd. will not entertain any cost extras arising from this action.

### **INSTRUCTION:**

1. The layout of the space containing the Materials Initiative D107, Materials Office D106, and Library D105 has been reversed.
  - a. The orientation of the utility sink and counter at the 3.0m wall in the Materials Initiative has been reversed. Two GFI, t-slot type receptacles and a direct connect have been moved from the South side of the 3.0m wall to the North Side;
  - b. The data outlet and two receptacles located on the North side of the 3.0m wall have been moved to the South side;
  - c. The data outlet and receptacle located on the North West wall of the Materials office has been moved to the South West wall of the Materials office;
  - d. Receptacle circuits have been updated to suit new layout;
  - e. See Sketch SK-E1.

**REQUESTED BY: Paul Berthelot, P.Eng.**



|  |   |                                 |                            |                            |
|--|---|---------------------------------|----------------------------|----------------------------|
| <b>BERTHELOT<br/>ENGINEERING LTD</b><br>2193 Lynhaven Rd    Tel. (705) 775-1517<br>Peterborough, ON<br>K9K 1W8 | <b>PROJECT</b><br>McRAE PROPERTY DEVELOPMENT - 553 BONACCORD STREET, PETERBOROUGH, ON |                                 |                            | <b>DWG</b><br><b>SK-E1</b> |
|  | <b>TITLE</b><br>RECEPTACLE LOCATION CHANGES   |                                 |                            |                            |
|  | <b>SCALE</b><br>1:75  | <b>DATE</b><br>OCTOBER 24, 2018 | <b>DSN</b><br>P. BERTHELOT | <b>DWN</b><br>T. ST. JEAN  |

**BERTHELOT ENGINEERING LTD.**  
2193 Lynhaven Rd, Peterborough, Ontario, Canada K9K 1W8  
Tel: (705) 775-1517 email: pberthelot@bertheloteng.com

**CONTEMPLATED CHANGE NOTICE**

**TO:** Gregg Gordon Architect  
516 Hunter St W  
Peterborough, ON  
K9H 2N1

**CCN. No.:** E1  
**PROJECT No.:** 115  
**PROJECT NAME:** McRae Property Development  
**DATE:** October 24, 2018

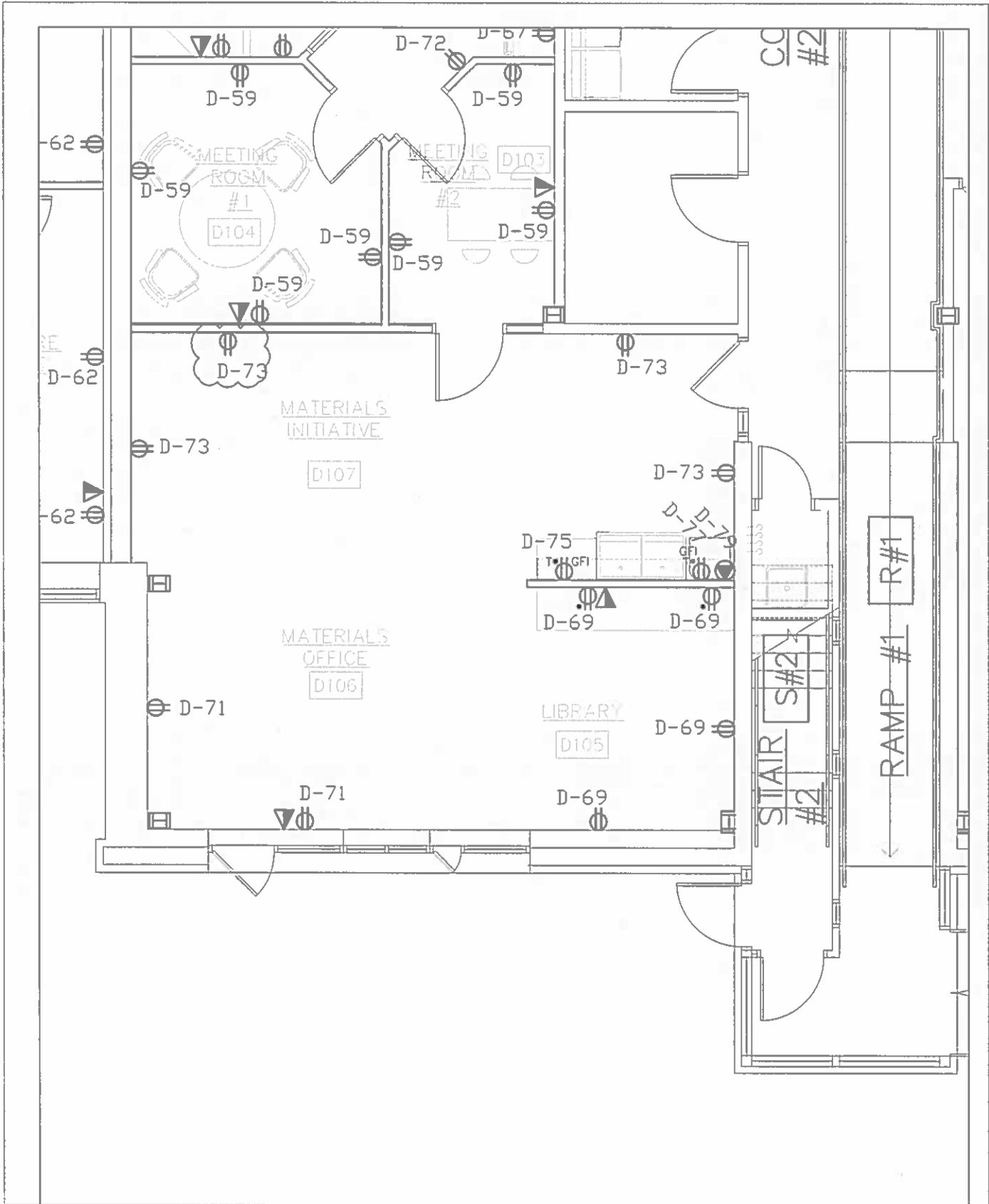
**ATTENTION: Gregg Gordon,**

The following are contemplated changes for this project. Work is not to proceed until authorized by a Change Order. All material and workmanship are to be in accordance to the Contract Documents unless otherwise stated. Please submit an itemized quotation for changes to the contract value and/or the project schedules within ten calendar days of the date of this Contemplated Change Notice.

**INSTRUCTION:**

1. Supply and install one 15A, 120V duplex receptacle on the North West wall of the Materials Initiative D107 space. Receptacle shall be fed from existing Materials Initiative circuit, D-73 in Daycare Panel 'D'.

**REQUESTED BY: Paul Berthelot, P.Eng.**



|  |   |                                 |                            |                            |
|--|---|---------------------------------|----------------------------|----------------------------|
| <b>BERTHELOT ENGINEERING LTD</b><br>2183 Lynhaven Rd<br>Peterborough, ON.<br>K9K 1W8<br>Tel (705) 775-1517 | <b>PROJECT</b><br>McRAE PROPERTY DEVELOPMENT - 553 BONACCORD STREET, PETERBOROUGH, ON |                                 |                            | <b>DWG</b><br><b>SK-E2</b> |
|  | <b>TITLE</b><br>RECEPTACLE ADDITION   |                                 |                            |                            |
|  | <b>SCALE</b><br>1:75  | <b>DATE</b><br>OCTOBER 24, 2018 | <b>DSN</b><br>P. BERTHELOT | <b>DWN</b><br>T. ST. JEAN  |